



SAHEJ  
**SOLITAIRE**  
—The Gem of Civil Township—



## PLANNED TO PERFECTION

Developing a land is just like the art and science of creating a gem-quality diamond out of mined rough stone. The manner in which a diamond is rated on the workmanship of shaping and polishing it, a real estate project is similarly valued on how a rough land is turned into a finished place. **Sahej Solitaire** is truly a perfect project cut and designed by the experienced developer and architects of **Rourkela, Realtech Group** offers fully developed flats in varied sizes to give you liberty to chose your won home the way you dreamed it.



**PRECIOUS  
PLACE TO OWN**





It's the carat that affects the size and price of a diamond. Similarly, in real estate, there are many factors that determine the value of a project. Primarily what enhances the value of the land are the location, planning, developer and amenities. **Sahej Solitaire**, at the prime location it has been superbly planned keeping in mind the lifestyle and essential amenities required for a comfortable living. Considering the advantages of the place it is most sought after and desirable place to plan a home of your wishes.





**Sahej Solitaire** is truly a heaven on earth. Beautifully landscaped with variety of trees, exotic plants and carpet of greens, Sahej Solitaire offers real pleasure of living in lap of nature. here enough open space is left so that you can lead a peaceful life, being in the prime location of the city.



BLESSED WITH  
NATURAL GREEN



PROMISING A  
CRYSTAL CLEAR  
FUTURE





Clearer the better. **Sahej Solitaire** ensures high grade clarity in all the promises. The positioning of the project on the most prime location of **Sahej Solitaire** is the biggest assurance of the multi folded raise in your investment here. All the major development and big openings are coming near and around the project.







- Structure : RCC frame with superior quality cement-concrete finish walls in conventional brickwork with cement plaster & plaster of Paris.
- Lobby : Granite finish with kota stone in staircase.
- Flooring : Vitrified tiles in bedrooms, living and dining.
- Doors : Decorative main flush door wooden frames and flush doors with veneer finish hardware fittings of reputed brand.
- Windows : Powder-coated aluminium windows with 4mm tinted glass.
- Sanitary : Chrome plated fittings of best quality.
- Kitchen : Platform made of granite with stainless steel sink, Tiles upto 2 ft above kitchen counter anti-skid tiles for floor.
- Toilet : Anti-skid tiles for floor upto door height hot & cold water in shower & high quality CP fittings.
- Provision : Exhaust fan point in kitchen and toilet.
- Electrical : Concealed electrical wiring/ adequate power points. Quality earthing for all electrochemical gadgets.
- Landscaping : Proper hard scape and soft scape to beautify the compound.







Strategically located at Civil Township main road yet connected amidst greenery in front so that you have all the advantages of urban life with sufficient open space. Being near to Hanuman Vatika, which is a nationally famous pilgrim place, the location of **Sahej Solitaire** is just perfect. With the ample available public transport, traveling to any part of the city will be a jiffy. Surrounded by high profile locality and top class Hospitals, Hotels, Shopping malls, the locale of Sahej Solitaire is already enriched. With daily-need markets, you get everything at hand. Sahej Solitaire has all the elements that ensure comfortable living.







Realtech Group commenced operations in 2002, and over the last two decades has evolved into a brand that is synonymous with Innovation, Quality, Trust and Customer Satisfaction.

Head quartered in Rourkela, Realtech Group has a network across Western Odisha, Bhubaneswar as well, Realtech Group's portfolio includes Residential, Retail and Commercial.

With over 10 million square feet of developed real estate, across 20 projects, Realtech Group has emerged as one of Odisha's leading property developers, and is constantly setting new benchmarks in the real estate industry.



# BASEMENT PLAN



← 24.39 MI. WIDE ROAD →

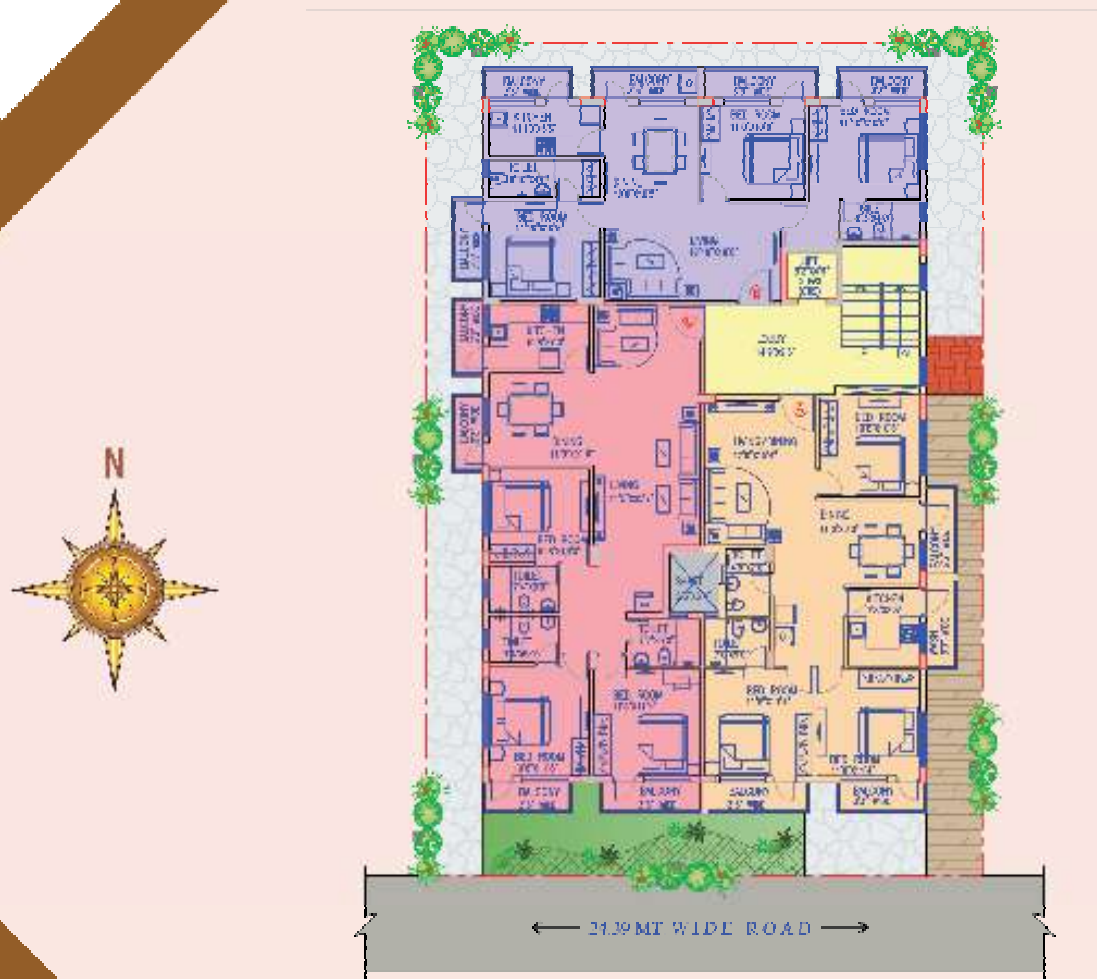
# Ground Floor Plan

## FLAT - A, B & C



Flat	Saleable area in sugar feet	Type
A	857	2 BHK
B	1210	3 BHK
C	1490	3 BHK

Typical Floor Plan (Option -1)  
1st to 4th Flore  
FLAT - A, B & C



Flat	Saleable area in sq. feet	Type
A	1410	3 BHK
B	1425	3 BHK
C	1650	3 BHK

Typical Floor Plan (Option -2)  
1st to 4th Floor

FLAT - A & B



Flat	Saleable area in suar feet	Type
A	3050	4 BHK
B	1425	3 BHK



Gems

Sahej  
Enclave

Sahej  
Residency

sahej garden

Sahej  
Plaza

Sahej success

Sahej Prestige

Sahej  
Villa

Sahej Lagoon

THE CROSSROAD

Sahej  
Green

Sahej  
Golf Course

Sahej Valley

Sahej  
Avenue  
SUNDARGARH

Sahej  
Vintage





**REAL TECH GROUP**  
BUILDING DREAMS TO REALITY

**SAHEJ REALCON PVT. LTD.**

1st floor Nanda Bhawan, Main Road, Rourkela

Phone : 0661 - 6054321. Mobile: 9776060001 / 9776060002 / 9776060003

Email : [info@realtechgroup.net](mailto:info@realtechgroup.net), [director@realtechgroup.net](mailto:director@realtechgroup.net), [Marketing@realtechgroup.net](mailto:Marketing@realtechgroup.net)

Website: [www.realtechgroup.net](http://www.realtechgroup.net)

**Architect-1**

Ar. Sameer Qureshi (B. Arch)

**Architect-2**

Ar. A. Basu (B. Arch)

1st floor Nanda Bhawan, Main Road, Rourkela.

Email : [architect@realtechgroup.net](mailto:architect@realtechgroup.net). Phone : 0661 - 6054321

The brochure is not a legal document. It describes the conceptual plan of Sahaj Realcon.  
This developer reserves the right to change/alter the layout plan, location, facilities and specifications.